

# THE UPPER ROOM STUDIO





*Based on our DIY and community values, there was no better way to unite art and sacred than with the Upper Room Church Studio. Home of our most precious artists and friends, from Alex Henry Foster to Your Favorite Enemies, Sef Lemelin and so on, this creative hub is still the heartbeat of a community of artists using music and visual art to make this world a more hopeful and inspiring place to live in and share...  
Welcome!*



# STUDIO GEAR

## **MICROPHONES**

- Neumann U47 fet original (2x)
- U87 original
- Flea 47
- Cole 4038 (2x)
- Royer R121 (2x)
- AKG 414XLS (2x)
- Neumann KM184 (2x)
- Josephson e22
- Blue Mouse (2x)
- Complete collection of Placid audio mics

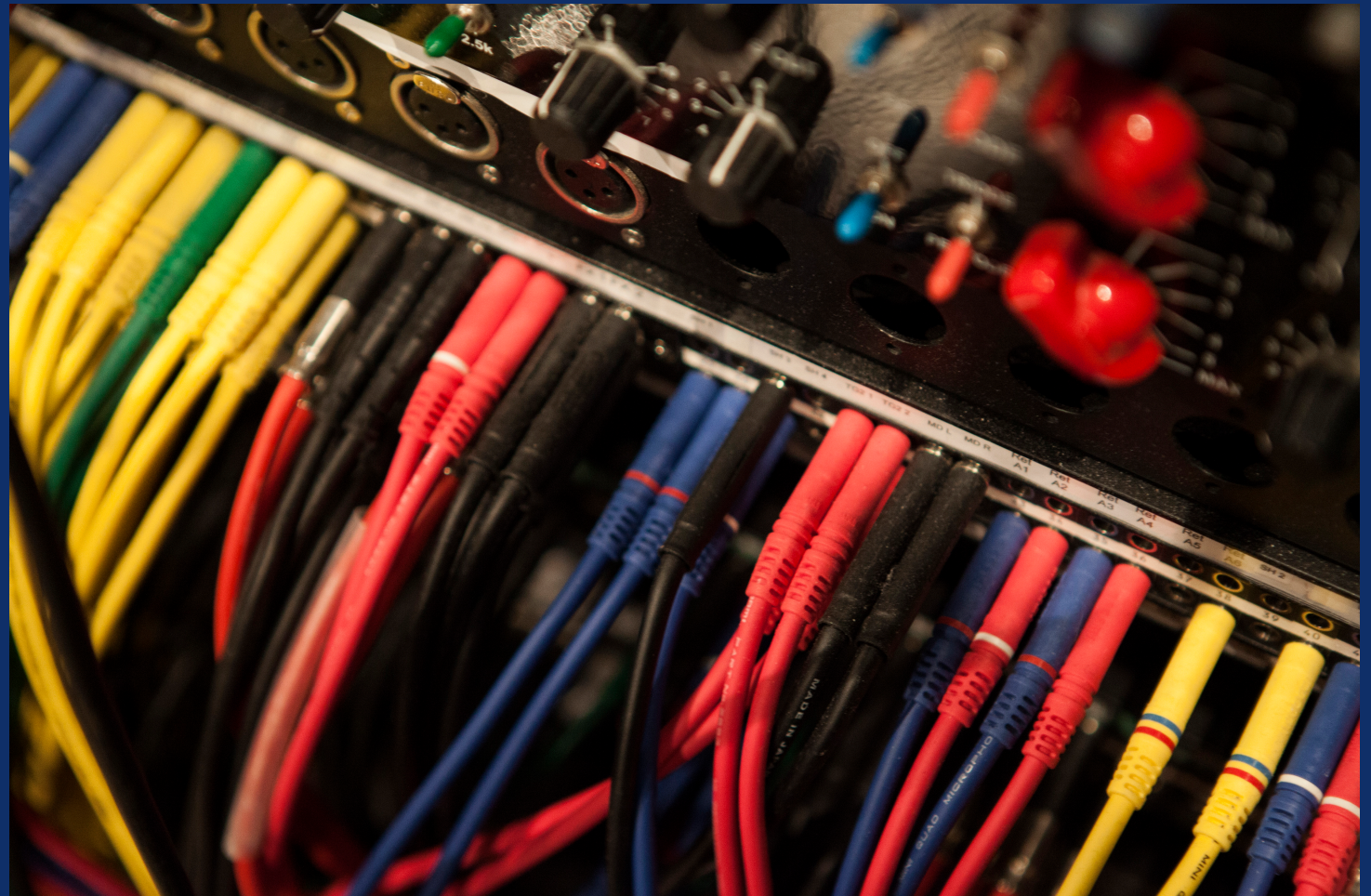
- AKG D112
- Audix D6
- SM7B (2x)
- Sennheiser 441
- Sennheiser 421 (4x)
- 6 sm57
- Beyerdynamics M88 (2x)
- Beyerdynamics M69
- Beta 87A
- Sennheiser e935 (1 wireless) (3x)
- Sennheiser e904 (3x)
- Sennheiser 914 (2x)
- Sennheiser 905
- Sennheiser 906 (2x)
- AEA R88
- Oktavas mk012 (4x)

## **DAW**

- MacPro6.1 six core 3.5GHZ (thrash can) with 32gb ram  
*(All plugin alliance, sound toys, mcdsp, waves, isotope, etc...)*
- Protools HDX 2020, 1 card in Sonnet expansion chasis  
*(Possibility of 48in/ 48 out)*
- Avid I/O 16x16 (2x)
- 192 IO with 2 input expansions (2x)
- Apogee AD16x
- Apogee Big Ben clock
- Joe Coe recorder

## **MONITORS**

- Neumann KH310 A + Sub KH 805
- Yamaha NS10
- K&H O300D
- Mackie HR824
- Yamaha HS7
- Kush Audio Controller  
*(with function Junction)*



# STUDIO GEAR

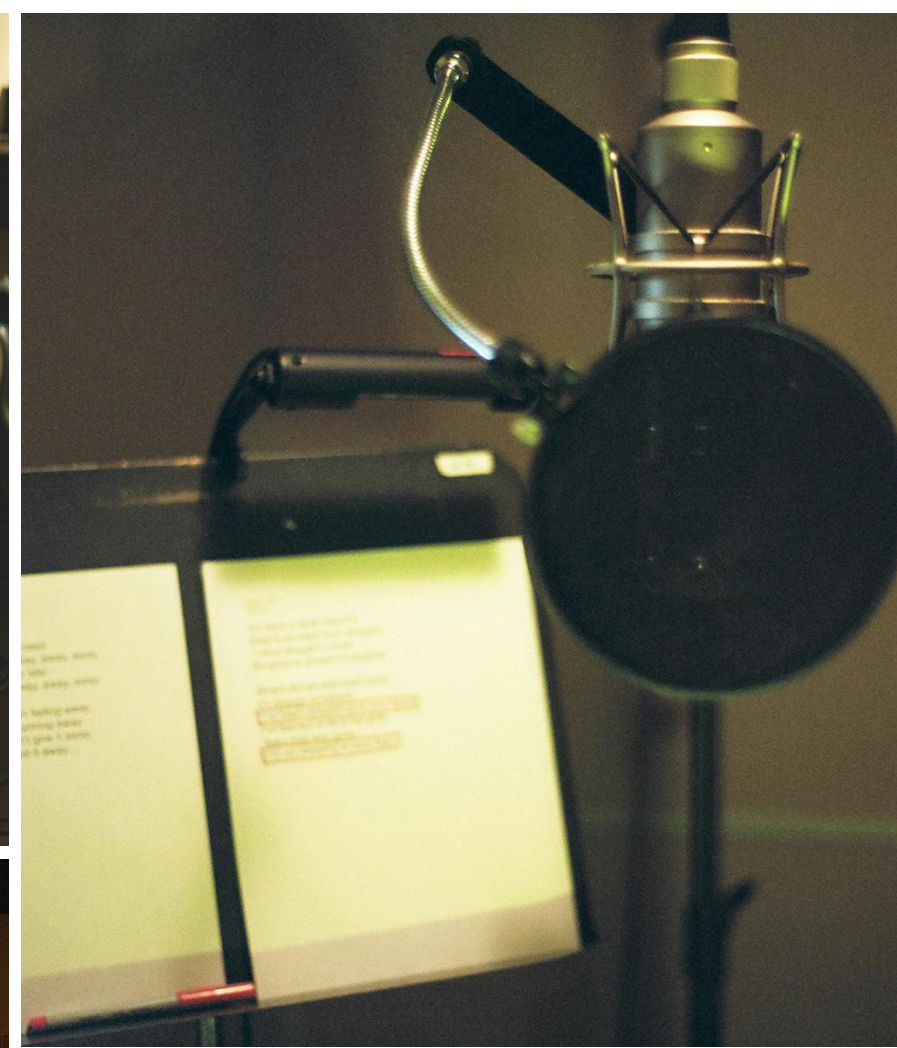
## **PREAMPS + OUTBOARDS**

- Toft Audio mixer ATB24 (24ch)
- Soundcraft series 5 (40ch)
- SSL Xlogic with:
  - Mic pre (XR621) (2x)
  - Comp/gate (XR618) (2x)
  - Gbuss Stereo Compressor (XR626) (2x)
- Brent Averill 1272 (2ch)
- Brent Averill 11 space rack 500 with :
  - Chandler Germanium (2x)
  - Brent Averill 312A (2x)
  - Avedis Ma5 (4x)
  - ADesign EM (2x)
  - Avedis E27 Eq
- Thermionic Culture The Rooster (2ch)
- Shadow Hills Quad Golden Age (4ch)
- Chandler EMI TG2 (2ch)
- Api The channel Strip (1ch)
- Apogee Mini MP (2ch)
- QSC Touch mix (16ch)
- Retro Sta-Level compressor
- Slate pro audio Dragon compressor
- Tubetech SSA2B summing amp
- Eventide Eclipse Fx processor
- Eventide Reverb 2016
- Roland Re-201
- Yamaha SPX 900
- CloudLifter (4ch total) (2x)
- Neve 1073 OPX 8 Channels
- Api 550A (2x)
- Ruppert Neve Design 551 (2x)
- Heritage Audio 73 EQ Jr (2x)

## **VIRTUAL INSTRUMENTS**

- Vienna Ensemble Pro 7
- Kontakt 6 with 4TB of sample library  
(*Spitfire, Native instruments, 8dio, LASS, etc..*)
- Arturia collections
- Many more vsti plugin... collections of orchestra vast







# INSTRUMENTS

## **GUITAR AMPS**

- Vox AC30 with Alnico blue speaker
- Orange head Thunderverb 200
- Orange head Custom Shop 50
- Orange head OR15
- Mack Skyraider 30 head
- Mack Heatseeker 15 head
- Savage Glas 30 2x12
- Savage Schatten 19 head
- Duesenberg Doozy! One 1x12
- Fender Twin Reverb Silverface 1969
- Vox AC15HTVH head
- Line 6 Vetta II head
- Line 6 AX212

## **BASS AMPS**

- Orange AD200B MKIII head
- David Eden World Tour 800 head
- David Eden E300 head

## **GUITAR CABS**

- Marshall Cabs 1960 Lead (2x)
- Orange Cab PPC412HP8
- Mack Cabs 1x12 (2x)

## **BASS CABS**

- Ampeg 8x10
- David Eden 4x10
- David Eden 2x15
- Leslie Cab

## **BASS**

- Fender Precision Re-issue '62
- Fender Jazz bass american deluxe
- Music Man Stingray Bass
- MF 6 strings Custom bass
- Ibanez Bass 6 strings SDGR Prestige

## **GUITARS**

- Fender Jazzmaster Thurston Moore
- Fender Jazzmaster Troy Van Leeuwen
- Fender Jazzmaster Lee Ranaldo
- Fender Jazzmaster Standard HH
- Fender Jaguar Re-issue '62
- Fender Jaguar Vintera '60s Modified HH
- Fender Telecaster Custom shop
- Fender Stratocaster American deluxe
- Fender Telecaster American standard
- Fender Telecaster Custom
- Duesenberg D-Caster
- Duesenberg Starplayer TV Guitar-Ice pearl (emerald)
- Duesenberg Starplayer TV Guitar Green emerald
- Duesenberg Starplayer TV Sparkle grey
- Duesenberg Starplayer TV Plus (piezo)
- Duesenberg StarPlayer TV Blue Sparkle
- Guitar Scott Walker Custom shop
- Guitar Scott Walker Custom shop
- Gibson Les Paul 58 re-issue
- Gibson Les Paul Studio
- Gretsch Power Jet
- Washburn P4
- Rickenbacker Model 330
- Gibson SG
- Eastwood Warren Ellis Tenor
- Eastwood Warren Ellis Tenor Baritone
- Eastwood Warren Ellis Mandostang (x3)
- Eastwood Bass VI
- Eastwood Airline Map Baritone DLX
- Eastwood Warren Ellis Mandocello
- Eastwood Airline Lap Steel Pro
- Schecter Diamond series The Cure

## **KEYBOARDS**

- Moog Subsequent 37
- Moog Mother 32
- Moog DFAM
- Moog Subharmonic
- Rhodes 73'
- Nord Stage EX classic 73
- Nord Electro 5
- Novation Mini Nova (2x)
- Novation PEAK
- M-audio MIDI Controller Oxygen
- Arturia Keystep MIDI Controller

## **DRUMS**

- Mapex Orion 10" 12" 14" 16" 22"
- Mapex M-series 12" 13" 16" 18" 22"
- Wide variety of Sabian Cymbals

## **SNARES**

- Mapex Black Panther
  - Brass hand hammered 14" x 5.5"
  - Blade 14" x 5.5"
  - Panther 14" x 5"
  - Maple 14" x 6.5"
- Mapex Orion burl maple 14" x 5.5"
- Mapex FastBack 12" x 7"

## **ELECTRONIC DRUMS AND PERCS**

- Roland Vdrum - Mesh heads
- Roland Spdsx sampling pad
- Remo Djembe
- Darbuka
- Assortment of shakers, tambourines and other percs

# INSTRUMENTS

## ***EFFECT PEDALS***

- Strymon TimeLine
- Strymon Big Sky
- Strymon Bluesky
- Earthquaker Devices Gray Channel
- Earthquaker Devices Palisades
- Earthquaker Devices Rainbow Machine
- Earthquaker Devices Organizer
- Earthquaker Devices Afterneath
- Earthquaker Devices Westwood
- Earthquaker Devices Arpanoid
- Earthquaker Devices Avalanche Run V2
- Earthquaker Devices Sea Machine V3
- Earthquaker Devices Aqueduct
- Earthquaker Devices Afterneath V3
- Death By Audio Evil Fuzz
- Death By Audio Echo Master
- Death By Audio Reverberation Machine
- Death By Audio Apocalypse
- Death By Audio Total Sonic Annihilation 2
- Death By Audio ROOMS
- Electro-Harmonix Big Muff (russian)
- Electro-Harmonix Small Clone
- Tech 21 Vt Bass
- Tech 21 Leeds
- Tech 21 VT Bass Deluxe
- Tech 21 Bass Boost Chorus
- Tech 21 Red Ripper
- Tech 21 Bass Boost Fuzz
- Tech 21 Rotochoir
- Mad Professor Blue Sky
- Mad Professor Compressor (2x)
- Mad Professor Sweet Honey
- Orange Fur Coat
- Orange Getaway Driver
- Homebrew elec. UFO
- Homebrew elec. UNO Mos
- HomeBrew Bytchn Swytchn Switcher
- HomeBrew Bytchn Swytchn Dual Looper
- Homebrew elec. Custom Wah
- Homebrew elec. Power Screamer
- Homebrew elec. Big D
- Homebrew elec. THC
- Homebrew elec. Psilocybe
- Homebrew Elec. Frost Byte (2x)
- Z-Vex Ring Tone
- Z-Vex Fuzz Factory
- Catalyn Bread Ottava Magus
- Ibanez Tube Screamer
- Durham Elec. Sex Drive (2x)
- Mid-Fi Clari(not)
- Mid-Fi Pitch Pirate
- Empress Vintage Modified Super Delay
- Digitech Whammy
- Subdecay Prometheus
- Donner EXP/Vol
- Moog EXP
- Carl Martin Octa-Switch II
- Carl Martin Plexi Tone
- Carl Martin Buffer
- Bad Cat Xtreme tone
- Ernie Ball Volume pedal (3x)
- Black Cat Mini Trem
- Meris Enzo
- T Rex Reptile
- T Rex Octavius
- Meris Ottobit Jr.
- Meris Preset Switch
- Midi Solution Quadra Thru
- TC electronic Nova Drive
- TC electronic Nova Modulator
- TC electronic Nova Dynamics
- TC electronic Nova Delay
- Dunlop Cry Baby GCB-E5
- Line 6 POD XT LIVE
- Line 6 Bass Pod XT live
- Line 6 M13
- Line 6 DL4 (2x)
- Boss DD500 (2x)
- Boss ES-8 x2
- Boss RV-500
- Boss MD-500
- Boss VE-500
- Boss SY-300
- Boss RC 300
- Boss Slicer SL-20
- Boss Bass Chorus
- Boss Equalizer bass
- Boss Dynamic Wah
- Boss Gt 6B
- Boss FV 50L
- Boss EV-30
- Boss SY-1000 w/GK-3
- Chase Bliss Audio Thermae
- Chase Bliss Audio Dark World
- Chase Bliss Audio Warped Vinyl HIFI
- Chase Bliss Audio MOOD
- Chase Bliss Audio Blooper
- Chase Bliss Preamp MK II
- Chase Bliss CXM 1978



# BROADCASTS

## **STAGE AUDIO BROADCAST**

### **Console:**

- Behringer Wing
- DL32 Midas Digital Snake
- QSC Touchmix 16

### **Wedges:**

- Yamaha DXR 12 (2x)
- EV ZLX 12P (7x)

### **Also available :**

- Sub EV ELX200 18sp
- Yamaha passive C112V + DBX drive rack + Crown 800 (2x)

### **DI:**

- Radial 8ch DI rack
- Avenson active

## **LIGHTS**

- Nanlite Forza 60B (with fresnel) (6x)
- Nanlite softbox (2x)
- Nanlite lantern
- Nanlite Pavo Tube (4x)
- PAR 20 (12x)

## **SOFTWARE AND HARDWARE**

- Atem television Studio
- Wirecast Telestream Software

## **VIDEO BROADCAST**

### **Cameras:**

- Sony a7siii
- Sony a7Sii
- Canon EOS R
- Canon EOS 6D mkII
- Canon EOS 5D mkII (4x)

### **Lenses:**

- Canon EF 16-35mm f2.8
- Canon EF 24-70 f2.8
- Canon EF 24-105 f4 (2x)
- Canon EF 40mm f2.8
- Canon EF 50mm f1.4 (2x)
- Canon EF 50mm f1.8
- Canon EF 85mm f1.8
- Canon EF 100mm f2.8 Macro
- Samyang 8mm f3.5 Fisheye
- Sony FE 70-200 f2.8
- Tokina AT-X Pro 11-16mm f 2.8

### **Others:**

- Atomos ninja Blade 5" (3x)
- Metabone EF lense adaptor (2x)

### **Tripods and Rigs:**

- Ronin S
- 4 tripods
- Crane
- Cine Dolly
- Shoulder Rack









# CONTACT

*THE UPPER ROOM STUDIO*

*1100 Jogues*

*Drummondville, Quebec*

*J2B 4X9*

*Canada*

*Jeff Beaulieu*

*[jeff@hopefultragedyrecords.com](mailto:jeff@hopefultragedyrecords.com)*

HOPEFUL  
TRAGEDY  
RECORDS